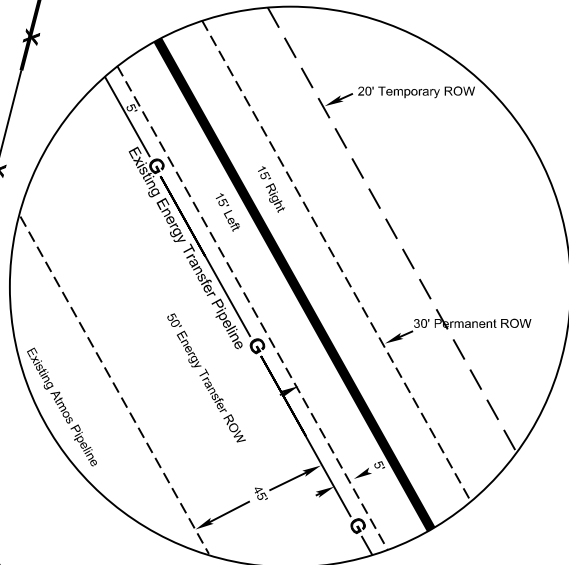


Exhibit "A"

Plan and Profile Dodd 1H Pipeline Rail Crossing Texas Municipal Power Agency Volume 987 Page 642 Grimes County, TX

Total Length = 165.22'
10.013 Rods
0.113 Acres Permanent Easement



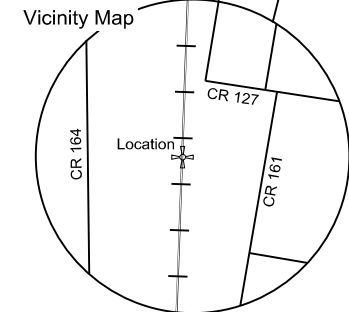
44+71.44
Lat 30°43'37.532" N
Lon 96°03'39.199" W

46+36.66
Lat 30°43'38.987" N
Lon 96°03'40.062" W

TMPA
Called 14.649 Acres
Vol 987 Pg 642

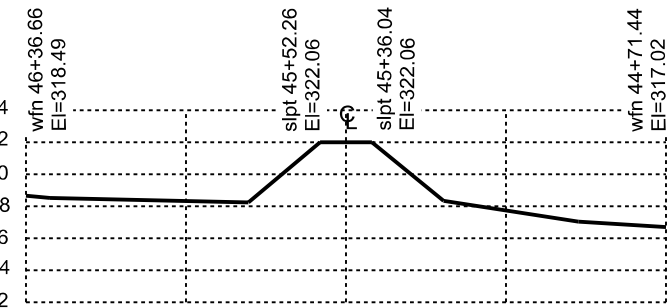


Garner, Mike
Called 168.18 Acres
Vol 1245 Pg 153



I hereby certify that this plat was prepared from a survey made on the ground under my supervision. Bearings herein are based on the Texas State Plane Coordinate System (NAD83), Central Zone 4203, using static GPS observations. Distances herein are expressed in US Survey Feet. To convert to grid, rotate bearings clockwise by a mapping angle of 2°11'55" and multiply distances shown by a combined factor of 0.99988.

Casey Doyl Cockrell Date
Registered Professional Land Surveyor
Texas Registration No. 6147



Minimum Depth -20' from
Top of Rail Ballast

302' - - - - -

